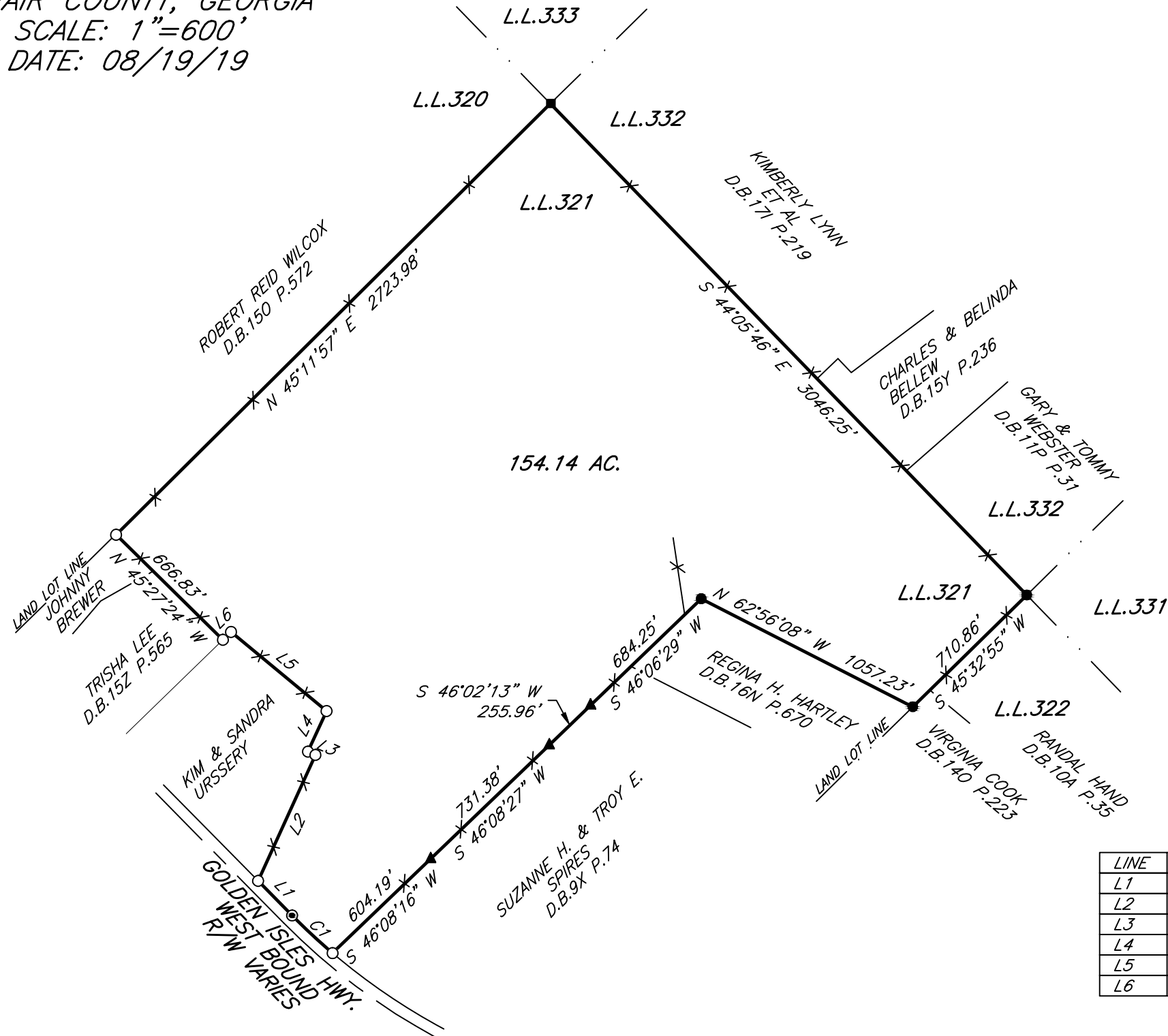
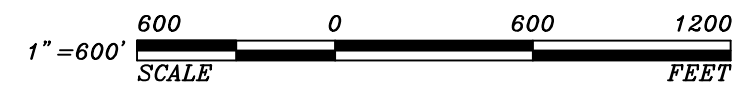
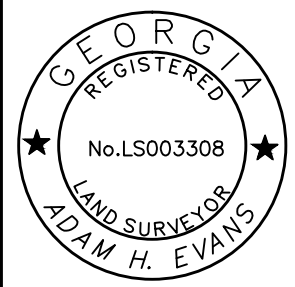


SURVEY FOR:
OLIN WOOTEN
 LOCATED IN LAND LOT 321, 7TH LAND DISTRICT
 TELFAIR COUNTY, GEORGIA
 SCALE: 1"=600'
 DATE: 08/19/19



- LEGEND:**
- 5/8 REBAR SET
 - IRON PIN FOUND
 - ▲ FENCE TURN-CORNER
 - ⊙ CALCULATED POSITION
 - CONCRETE MARKER FOUND
 - x— FENCE ON OR NEAR LINE

THE PROPERTY HEREON LIES COMPLETELY WITHIN A JURISDICTION WHICH DOES NOT REVIEW OR APPROVE ANY PLATS OR THIS TYPE OF PLAT PRIOR TO RECORDING. RECORDATION OF THIS PLAT DOES NOT IMPLY APPROVAL OF ANY LOCAL JURISDICTION, AVAILABILITY OF PERMITS, COMPLIANCE WITH LOCAL REGULATIONS OR REQUIREMENTS, OR SUITABILITY FOR ANY USE OR PURPOSE OF THE LAND. FURTHERMORE, THE UNDERSIGNED SURVEYOR CERTIFIES THAT THIS PLAT COMPLIES WITH THE MINIMUM TECHNICAL STANDARDS FOR PROPERTY SURVEYS IN GEORGIA AS SET FORTH IN THE RULES AND REGULATIONS OF THE GEORGIA BOARD OF REGISTRATION FOR PROFESSIONAL ENGINEERS AND LAND SURVEYORS AND AS SET FORTH IN O.C.G.A. SECTION 15-6-67.



Adam Evans
 GA. RLS 3308 08/19/19
 DATE

LINE	BEARING	DISTANCE
L1	N 44°32'50" W	215.86'
L2	N 24°26'54" E	616.19'
L3	N 65°40'06" W	36.30'
L4	N 24°38'54" E	198.40'
L5	N 50°21'06" W	552.20'
L6	S 45°50'02" W	50.42'

CURVE	RADIUS	ARC LENGTH	CHORD LENGTH	CHORD BEARING	DELTA ANGLE
C1	2814.79'	249.18'	249.10'	N 47°01'09" W	5°04'20"

ERROR OF CLOSURE: GREATER THAN 1' IN 10,000
 ANGULAR ERROR: LESS THAN 6" PER ANGLE
 ADJUSTED CLOSURE: 1' = 100,000'
 COMPASS RULE ADJUSTMENT
 FIELD SURVEYOR: LARRY EVANS
 EQUIP. USED: TOPCON GTS 3B TOTAL STATION-TRIMBLE GPS
 PLAT BY: LARRY EVANS
 COMP. FILE: OWOOTEN-081919

STATEWIDE SURVEYING COMPANY
 521 ETHEL STREET
 DOUGLAS, GEORGIA 31533
 912-384-7723