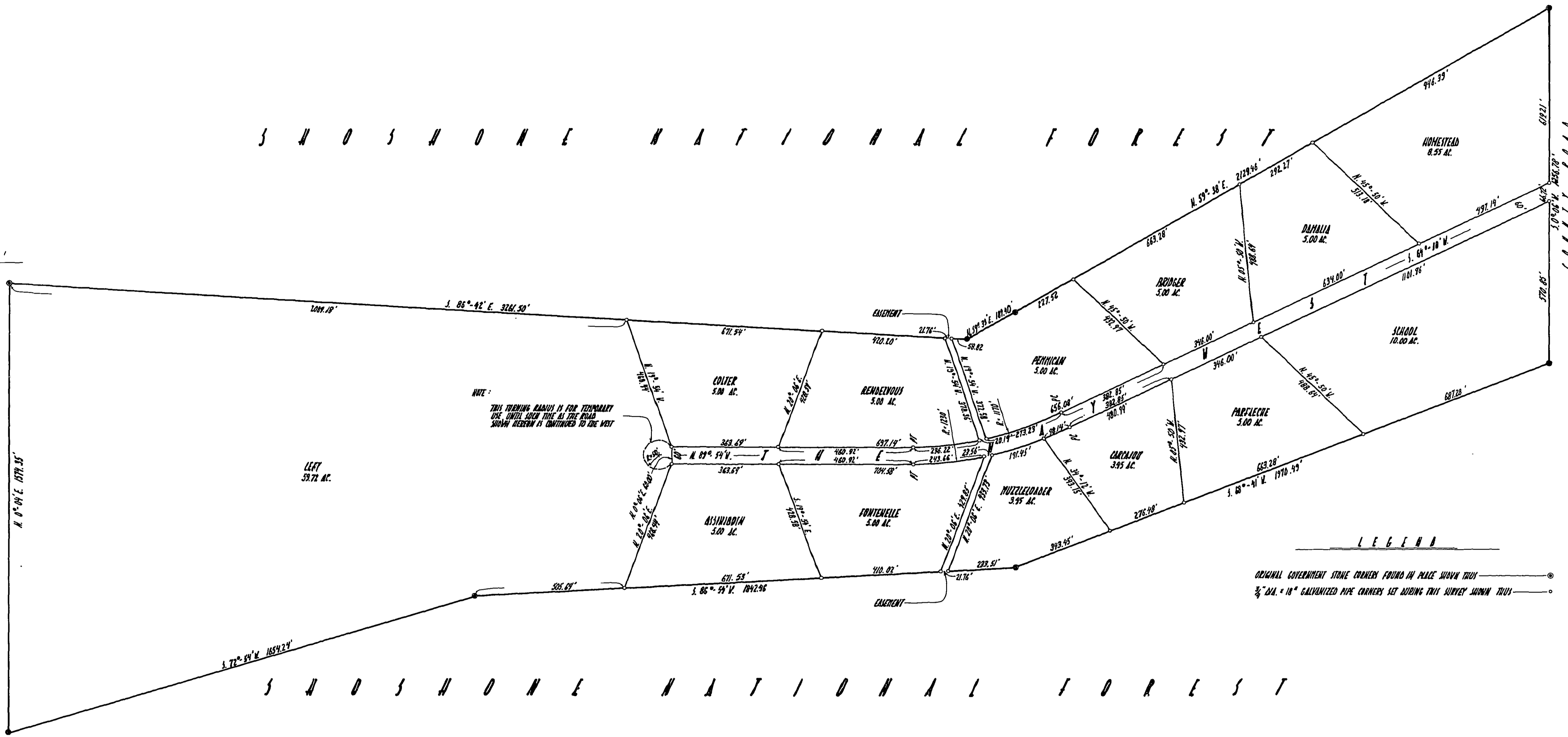
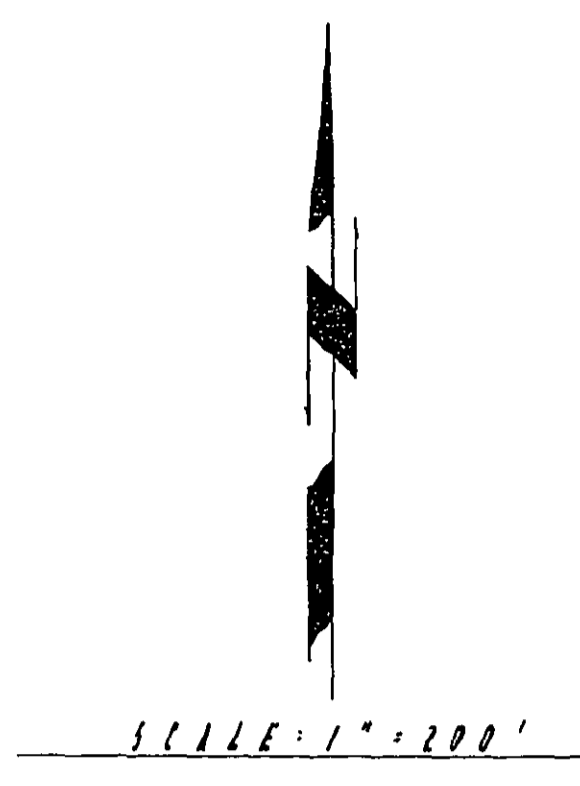


S H O S H O N E N A T I O N A L F O R E S T



S H O S H O N E N A T I O N A L F O R E S T

CERTIFICATE OF DEDICATION

STATE OF WYOMING
COUNTY OF PARK

We, the undersigned, do hereby certify that we are the owners and proprietors of Homestead Entry Survey No. 215 in Township 35 North, Ranges 104 and 105 West of the Sixth Principal Meridian, Park County, Wyoming, that we have caused said described lands to be surveyed and platted as shown hereon; that the above described foregoing subdivision of corners on this plat is with the true corners and to accordance with the desires of the undersigned owners and proprietors and shall be known as Mountain West Subdivision, and that we hereby dedicate and set apart the road and easements as shown hereon to the use of the general public forever.

We hereby release and relinquish all rights of Homestead.

In witness whereof, we hereunto set our hands this 3rd day of May, 1972.

John S. Bereman Louise Bereman
John S. Bereman Louise Bereman

STATE OF WYOMING
COUNTY OF PARK

The foregoing instrument was acknowledged before me this 3rd day of May, 1972, witness my hand and official seal.

Lessie G. Dodge
Notary Public

My commission expires October 30, 1975

SURVEYORS CERTIFICATE

I, John S. Bereman, of Cook Wyoming hereby certify that between April 15, 1972 and May 3, 1972, the Mountain West Subdivision was surveyed under my direction and is correctly described in the Certificate of Dedication, that the same is correctly shown on this plat which is drawn to the scale indicated, dimensions are given in feet and decimals and any surplus or deficiency existing is distributed uniformly in proportion to the plat dimensions. Distances shown along curved lines are measured along the arc.

Wyoming Registration No. 355 P.E.F.L.S. John S. Bereman
John S. Bereman

Approved this 3rd day of May, 1972, by the Commissioners of Park County, Wyoming subject to the provisions of Section 5 of the Park County policy on the approval of Subdivision and Townsite plats as adopted August 7, 1962.

Nora E. Larson
County Clerk

State of Wyoming, }
County of Park, } ss.
This instrument was filed for record on the 11th day of May, 1972 at 10:40 o'clock A.M. and duly recorded in Book C, records on page 58.

Eva C. Larson
Recorder of Deeds
By Carlson & Romelle
No. 140969 Price \$25.00

PLAT DRAWING
MOUNTAIN WEST SUBDIVISION
A SUBDIVISION OF
HOMESTEAD ENTRY SURVEY NO. 215
PARK COUNTY, WYOMING
ENGINEERING ASSOCIATES - COOK WYOMING
CONSULTING ENGINEERS & LAND SURVEYORS
May, 1972



COUNTY OF PARK
CODY, WYOMING

County Engineer's Office
Box 1539

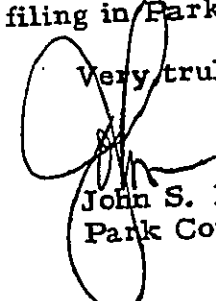
May 3, 1972

Park County Commissioners
Park County Courthouse
Cody, Wyoming 82414

Gentlemen:

A committee has reviewed the plat of Mountain
West Subdivision, finds it in order and recommends
that it be accepted for filing in Park County.

Very truly yours,


John S. Bereman
Park County Engineer

JSB:ld

cc: Mr. Mick McCarty
Mr. Dan Price
Mr. Bill Patten