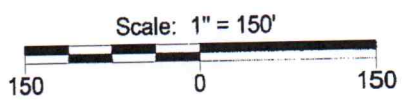
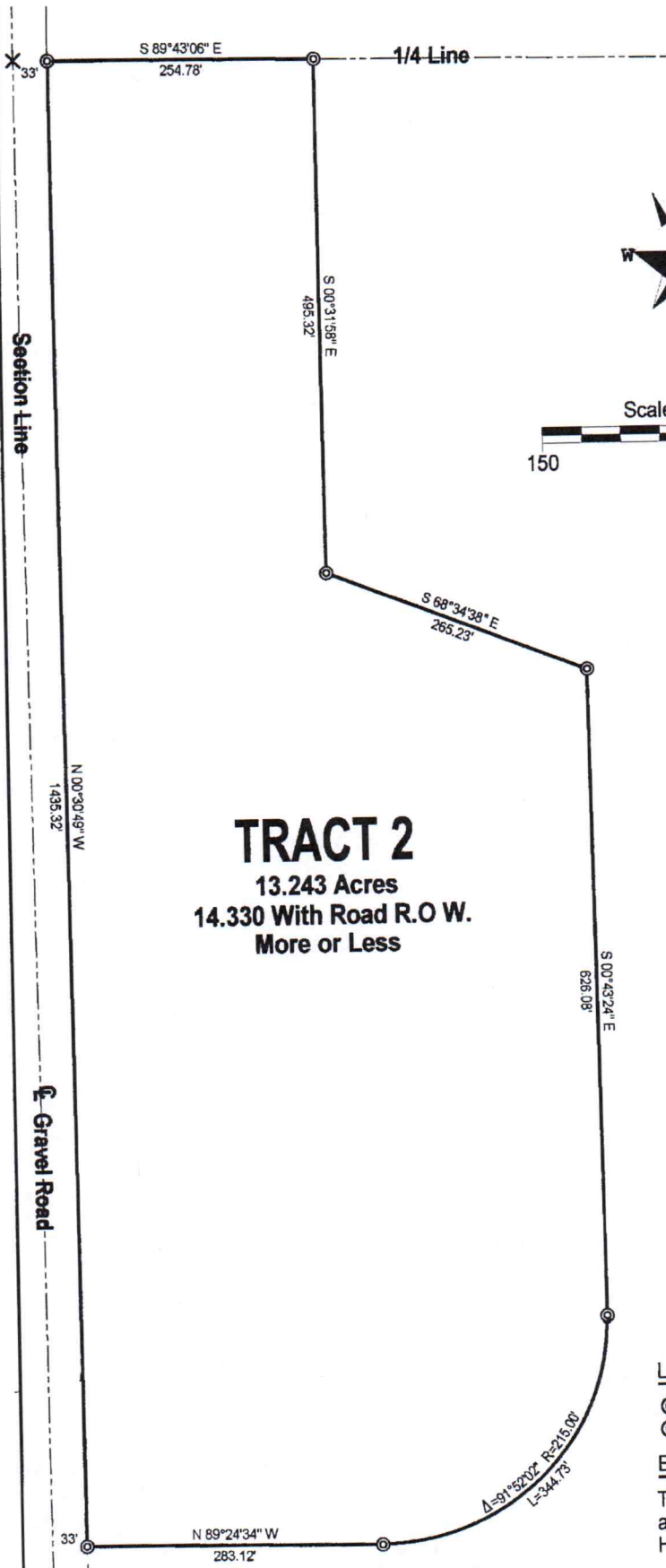


PLAT OF TRACT 2
SIMON ADDITION TO POTTER COUNTY
 located in the W1/2 SW1/4, Section 5, T118N, R74W, 5th P.M.,
 Potter County, South Dakota.



TRACT 2
 13.243 Acres
 14.330 With Road R.O.W.
 More or Less

Curve Data

Delta	91°52'02"
Radius	215.00'
Arc Length	344.73'
Tangent	222.12'
Degree	26°38'57"
Chord	308.97'
Ch Bear	N 44°56'01" E

LEGEND:

- ⊙ Set 1/2" Rebar & Cap, RLS # 6840
- ⊙ Found 1/2" Rebar

BASIS OF BEARINGS:

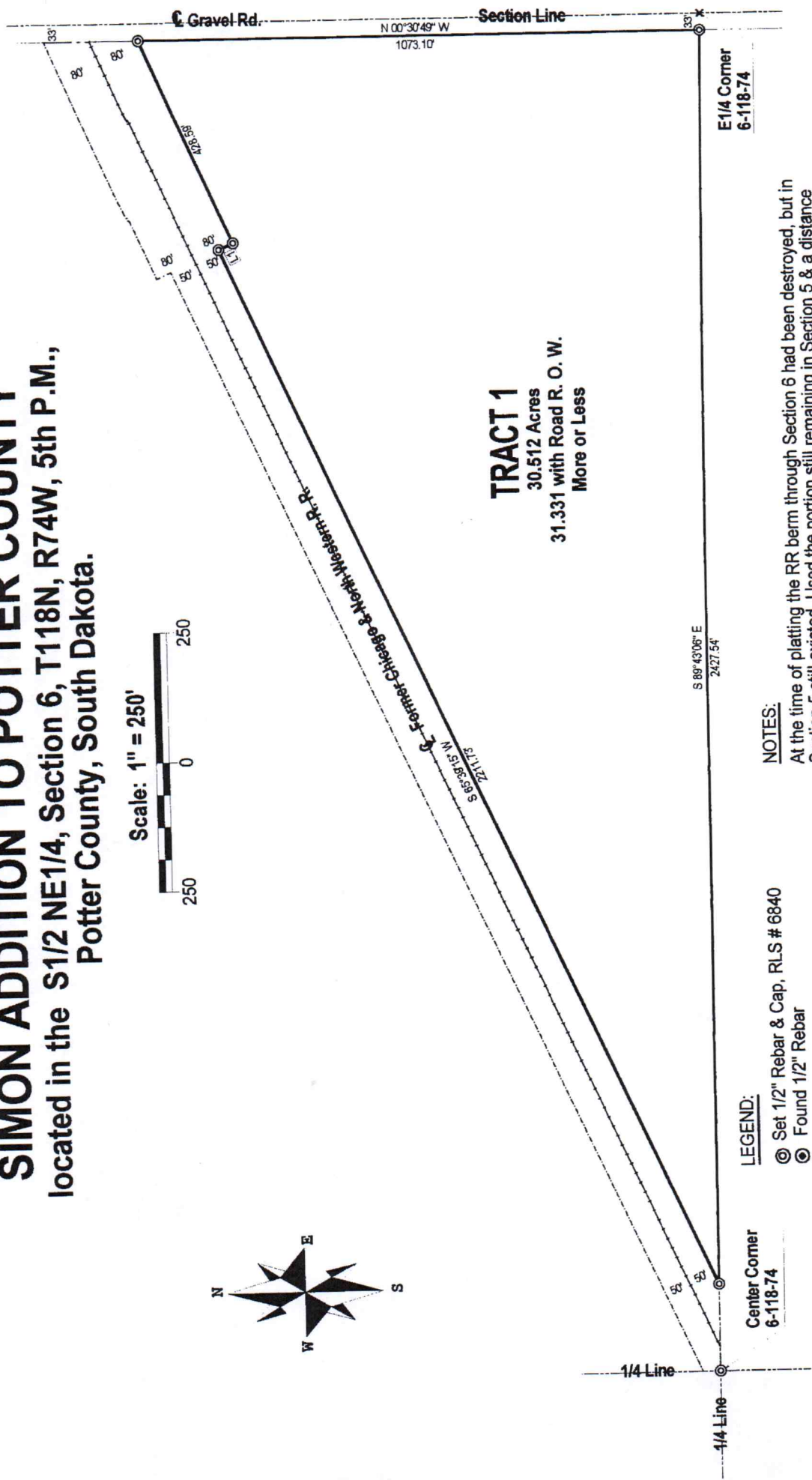
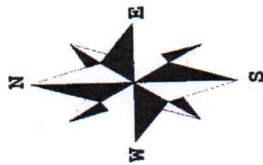
The South Line of Section 6, shown as N 89°45'-01" E on the DOT Highway Plats.

PLAT OF TRACT 1

SIMON ADDITION TO POTTER COUNTY

located in the S1/2 NE1/4, Section 6, T118N, R74W, 5th P.M.,
Potter County, South Dakota.

Scale: 1" = 250'



TRACT 1
30.512 Acres
31.331 with Road R. O. W.
More or Less

E1/4 Corner
6-118-74

Center Corner
6-118-74

- LEGEND:**
- ⊙ Set 1/2" Rebar & Cap, RLS # 6840
 - ⊙ Found 1/2" Rebar

BASIS OF BEARINGS:

The South Line of Section 6, shown as
N 89°45'-01" E on the DOT Highway Plats.

NOTES:
At the time of platting the RR berm through Section 6 had been destroyed, but in Section 5 still existed. Used the portion still remaining in Section 5 & a distance from the SW corner of Section 6 as shown on the drawings obtained from the Potter County Assessors Office to re-establish the RR Right of Way.

Id	Bearing	Distance
L1	S 24°20'45" E	30.00'