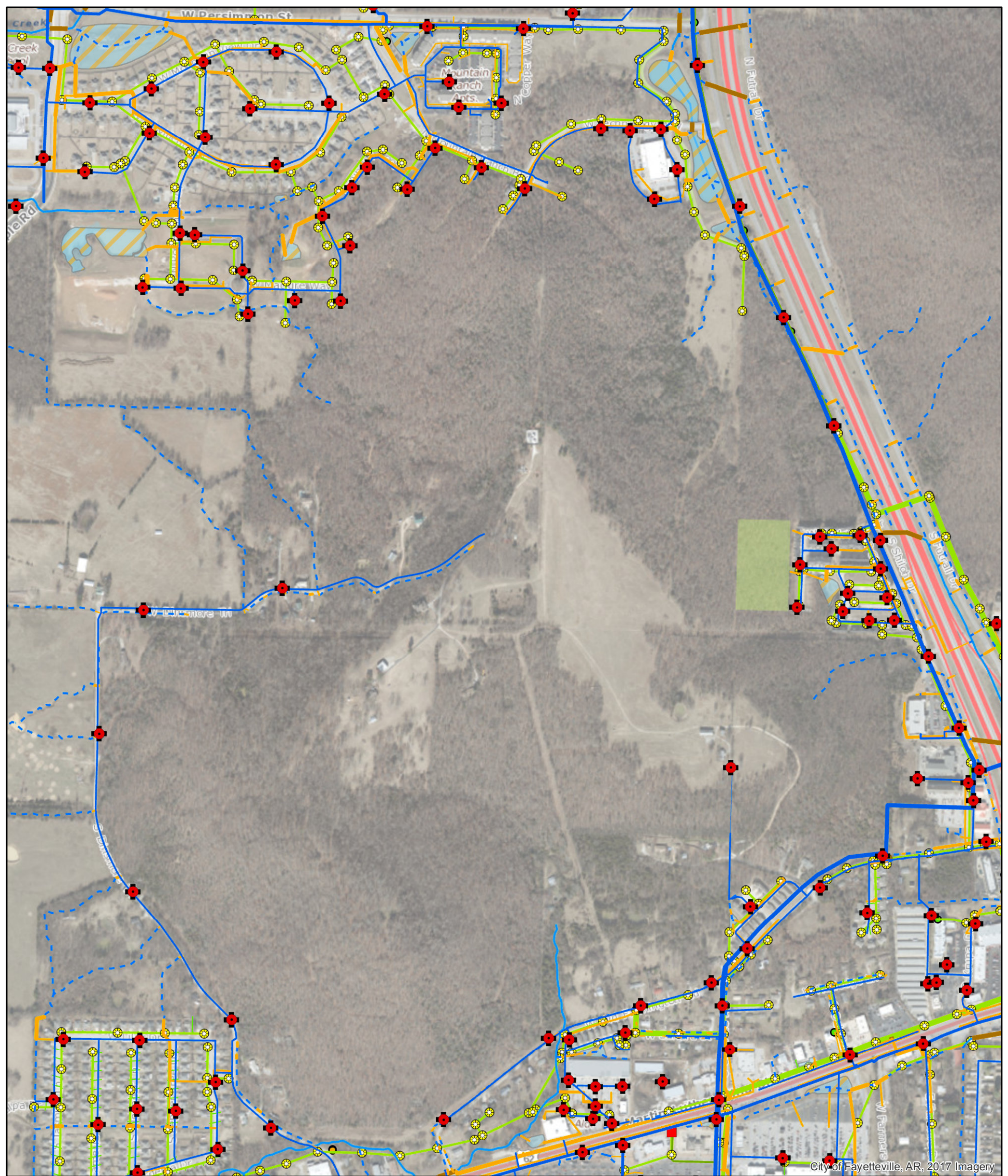


Fayetteville, AR



November 7, 2017

1:9,630

- Hydrant

Mains

Unknown Diameter

1" - 8"

10" - 20"

24" - 42"

Enclosed Storage Facility

Pump Station

Storm Gravity Main

Unknown Diameter

8" - 18"

20" - 32"

35" - 84"

Storm Box Culvert

Storm Open Channel

Stream

Sewer Manholes

Lift Station

Sewer Miscellaneous

Tracer Box

Treatment Plant

Storage Basin

Junction Chamber

Discharge Structure

Junction Chamber

Sewer Pressurized Main

2" - 8"

10" - 18"

20" - 36"

Sewer Main

Unknown

Up to 8"

8" to 12"

12" and Up

Sewer Lateral Line

Sewer Fitting

Sewer System Valve

Treatment Plant
-
- The data contained herein was compiled from various sources for the sole use and benefit of the City of Fayetteville Geographic Information System and the public agencies it serves. Any use of the data by anyone other than the City of Fayetteville is at the sole risk of the user; and by acceptance of this data, the user does hereby agree to indemnify the City of Fayetteville and hold the City of Fayetteville harmless from and without liability for any claims, actions, cost for damages of any nature, including the city's cost of defense, asserted by user or by another arising from the use of this data. The City of Fayetteville makes no express or implied warranties with reference to the data. No word, phrase, or clause found herein shall be construed to waive that tort immunity set forth under Arkansas law.